

Steelcase®



D1278

Reply
Seating

Visit steelcase.com

facebook.com/Steelcase twitter.com/Steelcase youtube.com/SteelcaseTV

Concept and Design / Steelcase
15-E0000248 11/15 © 2015 Steelcase Inc. All rights reserved. All specifications subject to change without notice.
Printed on at least 60% recycled paper. Cert no. BV-COC-858659. Printed in France by OTT Imprimeurs – Wasselonne.



Steelcase



D1506 | REPLY AIR TASK CHAIR (TR03, AIR 03), REPLY TASK CHAIR (TR07), KALIDRO DESK (W5,SL), B-FREE BIG CUBES (TR03), B-FREE SMALL CUBES (TR07)

Easy. Adaptable.

Reply breathes life into any environment or setting. Easy mobility allows for quick reconfiguration of the office to support individual and collaborative working.

Not only does Reply fit perfectly in medium and large floor plans, it also offers small businesses an easy and adaptable fit.

Comfort and Aesthetic

Steelcase has created Reply and Reply Air. A family of customised, high-performance seating which combines choice of aesthetic with real comfort and an easy to use ergonomic design.



D1279 | REPLY TASK CHAIR (AT15 ZIG ZAG PATTERN), B-FREE DESK (H1,G0)



C9175



C5518



D0732



C4529



C6893



C6894



D2228



C4525



Customisation & Functions

Reply Air offers the ability to easily move the chair wherever you want, thanks to an integrated backrest handle.



Reply Air combined with coat hanger for individual spaces.



Card holders for visitor cards can be fitted in three moveable positions to dedicate Reply to a single person or a particular department (in option).



Users have the choice of a height-adjustable lumbar support. Reply offers easy handle access to allow every individual to enjoy the best comfort.



Reply task chair offers a classic and sleek design to the workplace.
The upholstered version comes in merle and black finishes.

Different designs

Reply task chair's backrest comes with 3 areas corresponding to the pelvic, lumbar and thoracic parts of the spine. Two different densities of foam are used: flexible, soft foam to cushion the lumbar region and denser foam to provide full support to the upper and to the pelvic back part. These densities are visually demonstrated through the electro-welded upholstery pattern, which also provides better thermal comfort compared to standard upholstery. Increased air circulation keeps users cool, calm and comfortable.



Reply Air task chair offers modern and contemporary design.
The mesh version comes in seagull and black finishes.

Same high performance

Reply Air automatically and exactly adjusts to support an individual's spinal print. The tension of the mesh, and therefore the support it provides, adjusts according to the force placed on the backrest by the user.

Support different work modes

Reply creates a sleek and stylish working environment for cutting edge global businesses.

Ideal for individual workspaces, team areas or benching applications.

With Reply, organisations can demonstrate how much they value their employees.



C4454 | REPLY AIR TASK CHAIR (GAJA C2C 07, AIR 02), EASTSIDE AIR (GAJA C2C 07, AIR 02), FRAMEONE DESK (WY, ZW)



D1289 | REPLY AIR TASK CHAIR (AT16, AIR 03), B-FREE DESK (H1, ZW)



D1290 | REPLY COLOR (MERLE) UPHOLSTERED TASK CHAIR (TR16), FRAMEONE BENCH (WY)



D1079 | REPLY UPHOLSTERED TASK CHAIR (8010), KALIDRO DESK (W5, SL, MG), VOLUM ART PEDESTAL (MG, W5)

A large palette of finishes

Reply and Reply Air seating offer a range of innovative designs to allow individuals and organisations to customise and personalise their workspace.



D1070 | REPLY AIR TASK CHAIR (AT05, AIR 07), EASTSIDE SLED CHAIR WITH ARMREST (WM, AT05), FUSION DESK (WY, ZS), IMPLICIT PEDESTAL (WM)

Reply comes with 4 attractive upholstered patterns with a frame either in black or merle.



ZigZag



Code

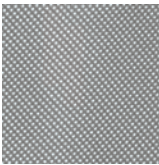


Champagne

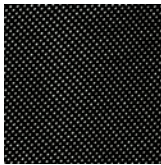


Network

Reply comes in 8 colourfull mesh finishes and with a frame either in black or seagull.



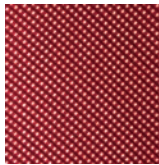
01 Grey



02 Black



03 White



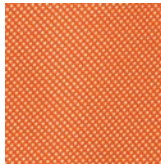
04 Red



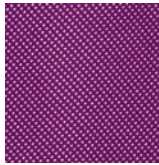
05 Royal Blue



06 Apple Green



07 Orange



08 Bright Purple



HANDLE on Reply fosters mobility by giving you a convenient handhold to move the chair where it's needed.

HEIGHT-ADJUSTABLE LUMBAR SUPPORT is optional on Reply mesh to enhance back support.

BACK HEIGHT adjustment on upholstered chair (not shown) allows you to raise or lower the chair's back from a seated position to support your lower back.

SEAT HEIGHT adjusts quickly with a simple pull of the lever so anyone can sit comfortably.

TILT TENSION adjustment allows you to control the amount of resistance needed for reclining.

ARMRESTS are adjustable in pivot angle, depth, width and height, to support your arms properly even when you change position.

ARM HEIGHT adjusts easily to keep your arms in proper alignment for any task.

MULTI-POSITION BACK LOCK allows you to lock the backrest in multiple positions.

SEAT DEPTH adjustment allows the seat to slide forward or back to accommodate different leg lengths.







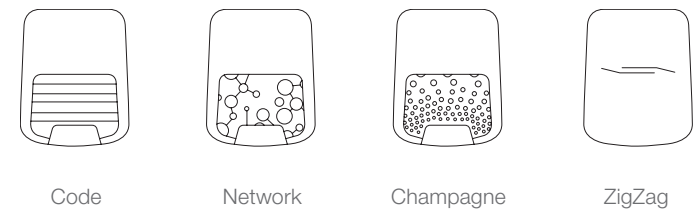
Controls Reply Standard Version:

- Synchronised mechanism
- Seat height adjustment
- Backrest height adjustment or adjustable lumbar support (in option for Reply Air)
- Tilt tension adjustment and multi-position backrest lock

Controls (options):

- Seat depth
- Armrests: height adjustable, height and width adjustable, height, angle and depth adjustable or height, width, angle and depth adjustable.

PATTERNS



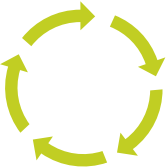
SURFACE MATERIALS

Surface materials shown in brochure:

Steelcut Trio TR03 Beige	Malla Air 02 Black
Steelcut Trio TR07 Mustard	Fame 8010 Blue
Steelcut Trio TR16 Lime Green	Fame 8014 Naranja
Air Mesh 01 Grey	Lucia DB46 Bordeaux
Air Mesh 03 White	Atlantic AT15 Scarlet
Malla Air 07 Orange	Atlantic AT16 Blue Jay

Colours are representative and may vary slightly from actual material.

DESIGNING FOR THE ENVIRONMENT REQUIRES INNOVATIVE THINKING AND SOLUTIONS.



LIFE CYCLE ASSESSMENT

During our products development process we consider each stage of the life cycle: from materials extraction, production, transport, use and reuse, until the end of its life.

Thanks to the Life Cycle Assessment (LCA) method, Steelcase quantified Reply environmental impacts to set the stage for further improvements.

This method, based on ISO 14040 and 14044 and selected by The European Union for environmental evaluation, allows us to quantify the environmental impact of our products throughout their whole lifecycle.

MATERIALS

17% recycled content by weight for the plastic base version, 26% for the aluminium base version.

PVC-free.

100% recycled cardboard and 30% recycled LDPE film (Low Density Polyethylene) in packaging.

Water-based inks without solvent on packaging.

PRODUCTION

ISO 14001 certification for the Sarrebourg site (France).

Powder-coat painting: VOC-free and free of heavy metals.

No gluing processes/water-based glue.

Water-based polyurethane foam.

TRANSPORT

Manufactured close to customers, in Europe.

Eco-smart ++ packaging - Minimised packaging weight and volume.

USE

Designed for a long product life.

Replaceable parts and easy-to-change textiles.

No toxic substances released by our eco-labeled textiles.

Maintenance information is available on steelcase.com

END OF LIFE

Up to 98% recyclable by weight.

100% recyclable cardboard and LDPE film for packaging.

Quick and easy disassembly.

Plastic parts clearly labelled for easy sorting and effective recycling.

CERTIFICATIONS

To show continuous improvements, we communicate Reply environmental performance through voluntary environmental labels and declarations.

Sustainability related actions and results are communicated in the annual Steelcase Corporate Responsibility report.

PRODUCT

 EPD - Environmental Product Declaration

 NF Environnement

 NF Office Excellence Certifié

 Indoor Advantage Gold

MATERIALS

 OekoTex 100 - Confidence in textiles

 European Eco-Label - for textiles

PLANTS

 ISO 14001 - Environmental management system

 OHSAS 18001 - Occupational Health and Safety Assessment Series

FIND OUT MORE

Sustainability related actions and results are annually communicated in the Steelcase Corporate Sustainability Report. More environmental details available upon request.