

SUBSTRATE

FIXING

THERMOPAD FixU T, THICKNESS 5 mm  
art.No 05.001.5

WASHER

THERMAL INSULATION LAYER

BRACKET FixU T, FIXED SUPPORT  
art.No 02.ft.160

T PROFILE 58x65x2.7 mm  
art.No 01.2.586527.6

RIVET Ø4.8x12 mm  
art.No 04.4.4812.1

HORIZONTAL PROFILE  
art.No 06.2.xxxx

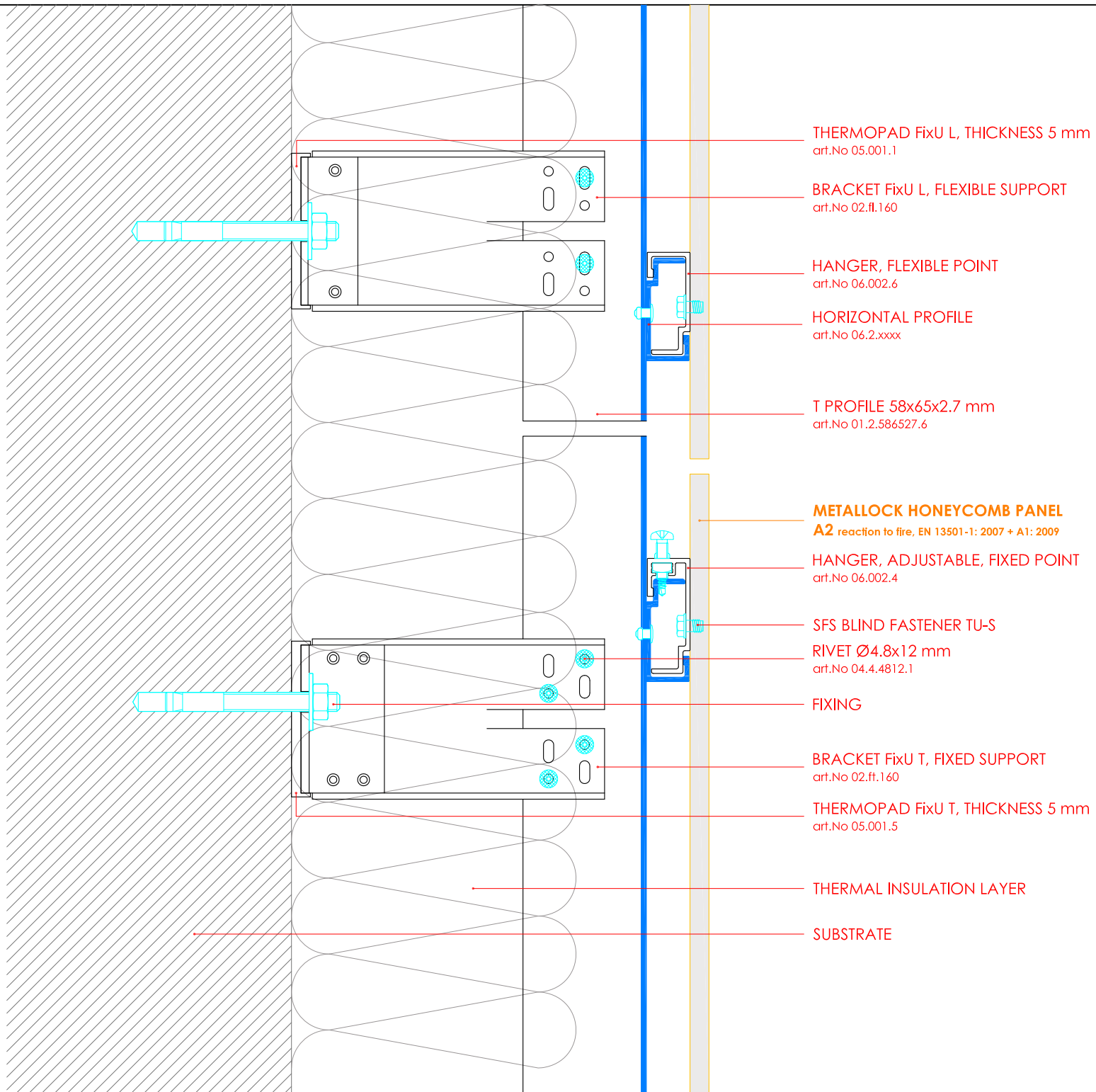
**METALLOCK HONEYCOMB PANEL**  
A2 reaction to fire, EN 13501-1: 2007 + A1: 2009

SFS BLIND FASTENER TU-S

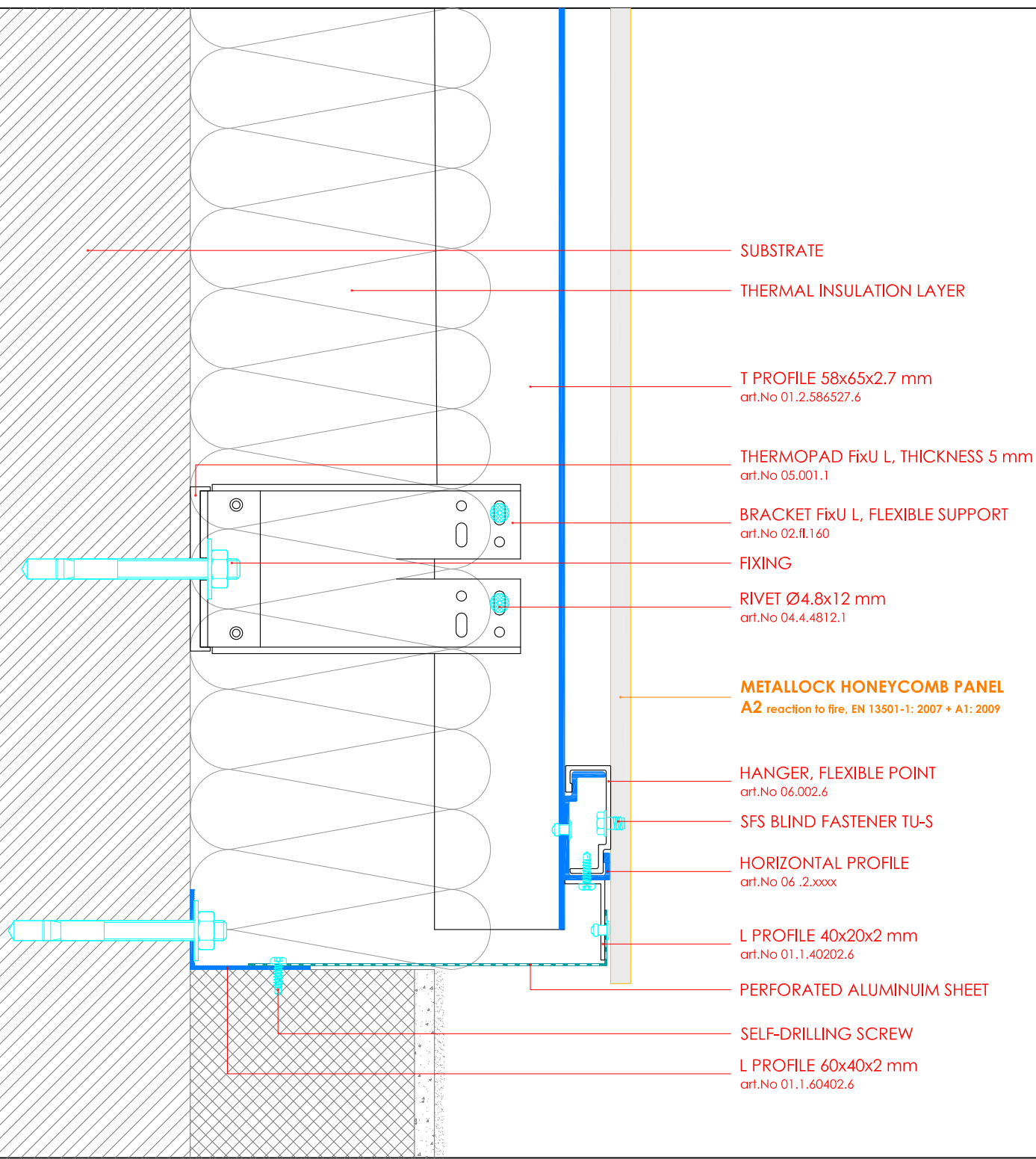
HANGER, ADJUSTABLE, FIXED POINT  
art.No 06.002.4

HANGER, ADJUSTABLE, FLEXIBLE POINT  
art.No 06.002.5

<b>ML - VF</b>	<b>Ventilated Facade</b>
	Plan View - Typical Detail
<b>metallock®</b>	33rd km Athens - Lamias Polydendri 19011, Greece T: +30 210 2403060 Info@metallock.com www.metallock.com



<b>ML - VF</b>	<b>Ventilated Facade</b>
	Section View - Typical Detail
<b>metallock®</b> 33rd km Athens - Lamias Polydendri 19011, Greece T: +30 210 2403060 Info@metallock.com www.metallock.com	



SUBSTRATE

THERMAL INSULATION LAYER

T PROFILE 58x65x2.7 mm  
art.No 01.2.586527.6

THERMOPAD FixU L, THICKNESS 5 mm  
art.No 05.001.1

BRACKET FixU L, FLEXIBLE SUPPORT  
art.No 02.fl.160

FIXING

RIVET Ø4.8x12 mm  
art.No 04.4.4812.1

**METALLOCK HONEYCOMB PANEL**  
A2 reaction to fire, EN 13501-1: 2007 + A1: 2009

HANGER, FLEXIBLE POINT  
art.No 06.002.6

SFS BLIND FASTENER TU-S

HORIZONTAL PROFILE  
art.No 06 .2.xxxx

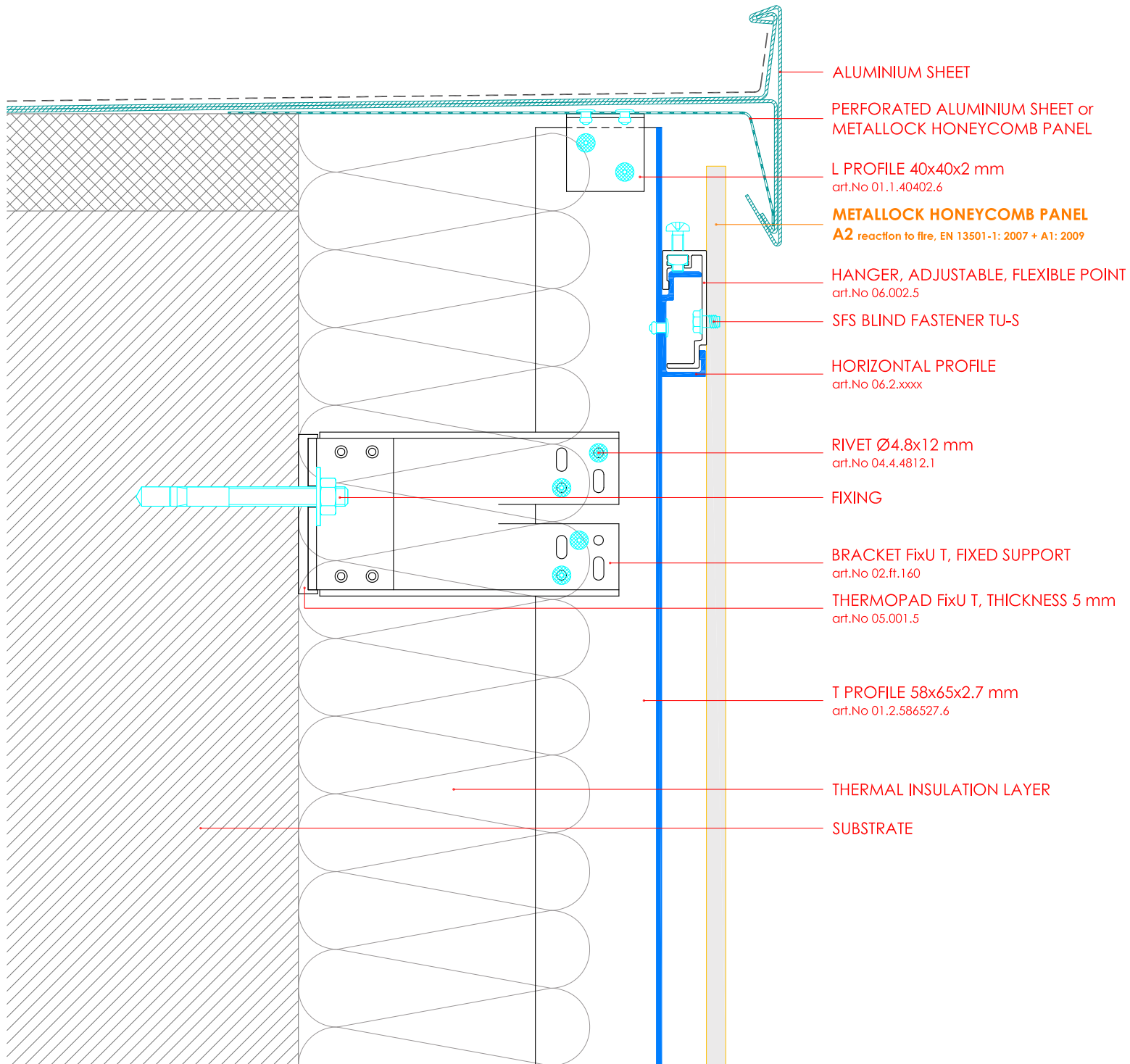
L PROFILE 40x20x2 mm  
art.No 01.1.40202.6

PERFORATED ALUMINIUM SHEET

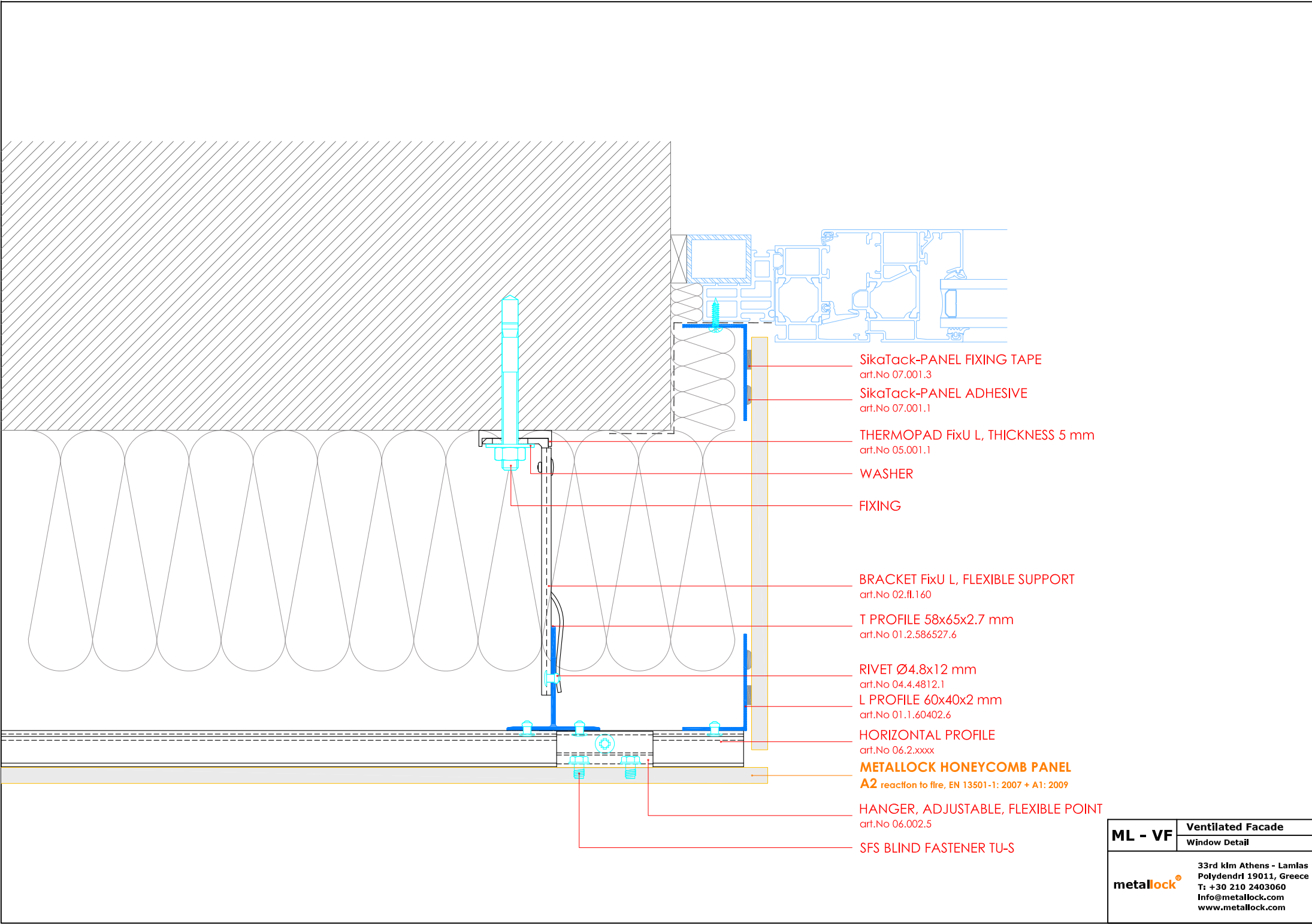
SELF-DRILLING SCREW

L PROFILE 60x40x2 mm  
art.No 01.1.60402.6

<b>ML - VF</b>	<b>Ventilated Facade</b>
	Interlocking Channel At Base
<b>metallock®</b>	33rd km Athens - Lamias
	Polydendri 19011, Greece
	T: +30 210 2403060
	Info@metallock.com www.metallock.com

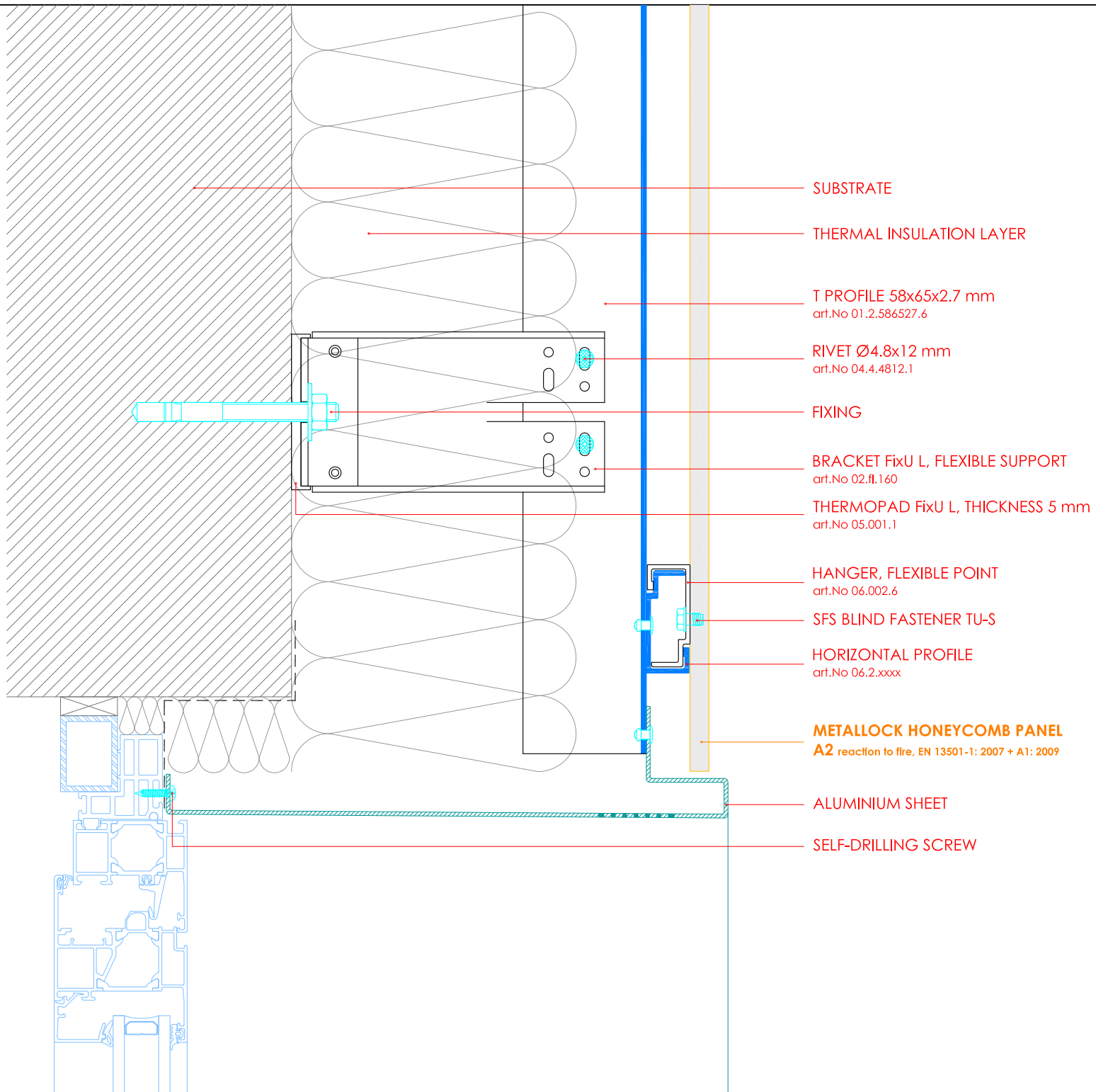


<b>ML - VF</b>	<b>Ventilated Facade</b>
	Typical Coping Detail
<b>metallock®</b> 33rd km Athens - Lamias Polydendri 19011, Greece T: +30 210 2403060 Info@metallock.com www.metallock.com	



- SikaTack-PANEL FIXING TAPE  
art.No 07.001.3
- SikaTack-PANEL ADHESIVE  
art.No 07.001.1
- THERMOPAD FixU L, THICKNESS 5 mm  
art.No 05.001.1
- WASHER
- FIXING
- BRACKET FixU L, FLEXIBLE SUPPORT  
art.No 02.fl.160
- T PROFILE 58x65x2.7 mm  
art.No 01.2.586527.6
- RIVET Ø4.8x12 mm  
art.No 04.4.4812.1
- L PROFILE 60x40x2 mm  
art.No 01.1.60402.6
- HORIZONTAL PROFILE  
art.No 06.2.xxxx
- METALLOCK HONEYCOMB PANEL**  
**A2** reaction to fire, EN 13501-1: 2007 + A1: 2009
- HANGER, ADJUSTABLE, FLEXIBLE POINT  
art.No 06.002.5
- SFS BLIND FASTENER TU-S

<b>ML - VF</b>	<b>Ventilated Facade</b>
	Window Detail
33rd km Athens - Lamias Polydendri 19011, Greece T: +30 210 2403060 Info@metallock.com www.metallock.com	



SUBSTRATE

THERMAL INSULATION LAYER

T PROFILE 58x65x2.7 mm  
art.No 01.2.586527.6

RIVET Ø4.8x12 mm  
art.No 04.4.4812.1

FIXING

BRACKET FixU L, FLEXIBLE SUPPORT  
art.No 02.fl.160

THERMOPAD FixU L, THICKNESS 5 mm  
art.No 05.001.1

HANGER, FLEXIBLE POINT  
art.No 06.002.6

SFS BLIND FASTENER TU-S

HORIZONTAL PROFILE  
art.No 06.2.xxxx

**METALLOCK HONEYCOMB PANEL**  
A2 reaction to fire, EN 13501-1: 2007 + A1: 2009

ALUMINIUM SHEET

SELF-DRILLING SCREW

<b>ML - VF</b>	<b>Ventilated Facade</b>
	Typical Window Head Detail
<b>metallock®</b>	33rd km Athens - Lamlas
	Polydendri 19011, Greece
	T: +30 210 2403060
	Info@metallock.com www.metallock.com